

Daily Agri Commodity Analysis

Monday, July 12, 2021
Monday



COMMODITY MARKET

MARKET MOVEMENT

| Commodity | Unit | Last | % Cng | Weekly | Monthly | YTD | Yearly | 50DMA | 100DMA | 200DMA |
|-----------|---------|----------|-------|--------|---------|-------|--------|-------|--------|--------|
| Soyabean | 5MT | 7224.00 | 2.44 | 1.41 | 3.95 | 56.94 | 47.98 | BUY | BUY | BUY |
| Rmseed | 10MT | 6882.00 | 1.31 | -3.97 | -2.85 | 22.22 | 31.81 | SELL | BUY | BUY |
| Soyoil | 5MT | 1285.40 | 2.43 | 0.40 | -8.68 | 9.41 | 36.24 | SELL | SELL | BUY |
| Castor | 5MT | 5308.00 | 1.10 | 2.26 | 3.50 | 18.32 | 24.11 | BUY | BUY | BUY |
| Cpo | 10MT | 1034.30 | 2.29 | 0.92 | -9.79 | 6.39 | 34.94 | SELL | SELL | BUY |
| Turmeric | 5MT | 7264.00 | -1.36 | -2.75 | -6.99 | 21.88 | 21.09 | SELL | SELL | BUY |
| Jeera | 3MT | 13250.00 | -0.45 | -0.94 | -5.36 | 1.92 | -4.68 | SELL | SELL | SELL |
| Dhaniya | 10MT | 6528.00 | 0.00 | -2.85 | -3.68 | 5.29 | 3.98 | SELL | SELL | SELL |
| Cotton | 25BALES | 25210.00 | 0.16 | 1.67 | 3.05 | 22.20 | 35.82 | BUY | BUY | BUY |
| Cocodakl | 10MT | 2871.00 | -0.59 | -2.54 | -5.12 | 41.64 | 27.86 | BUY | BUY | BUY |
| Chana | 10MT | 4922.00 | 0.37 | -4.08 | -6.20 | 10.24 | 15.89 | SELL | SELL | SELL |
| Mentha | 1080Kgs | 993.20 | -2.20 | -3.00 | 7.18 | -0.28 | 1.83 | BUY | BUY | BUY |
| Guarseed | 5MT | 4063.00 | -0.07 | -2.61 | -3.72 | 2.76 | 9.80 | SELL | SELL | BUY |
| Guargum | 5MT | 6303.00 | -0.49 | -2.25 | -4.13 | 4.16 | 11.99 | SELL | BUY | BUY |

Note:

* 50DMA - If prices trading above 50DMA "BUY" Signal is shown

* 100DMA - If prices trading above 50DMA "BUY" Signal is shown

* 200DMA - If prices trading above 50DMA "BUY" Signal is shown

* 50DMA - If prices trading below 50DMA "SELL" Signal is shown

* 100DMA - If prices trading below 50DMA "SELL" Signal is shown

* 200DMA - If prices trading below 50DMA "SELL" Signal is shown

* Domestic Rates are as per closing basis

SMIFS Limited

5F, Vaibhav, 4 Lee Road, Kolkata – 700020, India

Page No

1



Daily Agri Commodity Analysis

Monday, July 12, 2021



SMIFS
LIMITED
LEGACY | TRUST | GROWTH

Calendar Spreads Snapshot

| Commodity | Spread | P. Spread | Change |
|-----------|----------|-----------|---------|
| Soyabean | -396.00 | -458.00 | 62.00 |
| Rmseed | 6.00 | 32.00 | -26.00 |
| Soyoil | -15.30 | -19.50 | 4.20 |
| Castor | 54.00 | -5250.00 | 5304.00 |
| Cpo | -11.00 | -13.20 | 2.20 |
| Turmeric | -7264.00 | -7364.00 | 100.00 |
| Jeera | 150.00 | 340.00 | -190.00 |
| Dhaniya | -6528.00 | -6528.00 | 0.00 |
| Cotton | 210.00 | 220.00 | -10.00 |
| Cocodakl | 53.00 | 46.00 | 7.00 |
| Chana | 81.00 | 82.00 | -1.00 |
| Mentha | 15.40 | 14.50 | 0.90 |
| Guarseed | 87.00 | 48.00 | 39.00 |
| Guargum | 118.00 | 104.00 | 14.00 |

Open Interest Snapshot

| Commodity | Last | OI | % Cng | Status |
|-----------|----------|-----------|-------|----------------|
| Soyabean | 7224.00 | 34710.00 | 11.32 | Fresh Buying |
| Rmseed | 6882.00 | 45820.00 | 9.51 | Fresh Buying |
| Soyoil | 1285.40 | 35815.00 | 1.26 | Fresh Buying |
| Castor | 5308.00 | 38210.00 | 17.14 | Fresh Buying |
| Cpo | 1034.30 | 5196.00 | 0.23 | Fresh Buying |
| Turmeric | 7264.00 | 9720.00 | 12.05 | Fresh Selling |
| Jeera | 13250.00 | 5379.00 | 18.12 | Fresh Selling |
| Dhaniya | 6528.00 | 5585.00 | 18.20 | Fresh Selling |
| Cotton | 25210.00 | 4812.00 | -4.01 | Short Covering |
| Cocodakl | 2871.00 | 48500.00 | 34.16 | Fresh Selling |
| Kapas | 1285.00 | 398.00 | -8.08 | Short Covering |
| Chana | 4922.00 | 105390.00 | 8.67 | Fresh Buying |
| Mentha | 993.20 | 924.00 | 3.82 | Fresh Selling |
| Guarseed | 4063.00 | 39520.00 | 11.31 | Fresh Selling |
| Guargum | 6303.00 | 46115.00 | 7.14 | Fresh Selling |

Commodity Market Daily Trading Levels

| Commodity | Close | Support 3 | Support 2 | Support 1 | Pivot Point | Resist 1 | Resist 2 | Resist 3 | Trend |
|-----------|----------|-----------|-----------|-----------|-------------|----------|----------|----------|----------|
| Soyabean | 7224.00 | 6866.00 | 6948.00 | 7086.00 | 7168.00 | 7306.00 | 7388.00 | 7526.00 | Positive |
| Rmseed | 6882.00 | 6594.00 | 6667.00 | 6774.00 | 6847.00 | 6954.00 | 7027.00 | 7134.00 | Positive |
| Soyoil | 1285.40 | 1223.00 | 1236.00 | 1261.00 | 1274.00 | 1299.00 | 1312.00 | 1337.00 | Positive |
| Castor | 5308.00 | 5218.00 | 5241.00 | 5274.00 | 5297.00 | 5330.00 | 5353.00 | 5386.00 | Positive |
| Cpo | 1034.30 | 993.10 | 1002.80 | 1018.60 | 1028.30 | 1044.10 | 1053.80 | 1069.60 | Positive |
| Turmeric | 7264.00 | 7102.00 | 7176.00 | 7220.00 | 7294.00 | 7338.00 | 7412.00 | 7456.00 | Negative |
| Jeera | 13250.00 | 13080.00 | 13145.00 | 13200.00 | 13265.00 | 13320.00 | 13385.00 | 13440.00 | Negative |
| Dhaniya | 6528.00 | 6416.00 | 6463.00 | 6496.00 | 6543.00 | 6576.00 | 6623.00 | 6656.00 | Range |
| Cotton | 25210.00 | 24200.00 | 24660.00 | 24940.00 | 25400.00 | 25680.00 | 26140.00 | 26420.00 | Positive |
| Cocodakl | 2871.00 | 2792.00 | 2826.00 | 2848.00 | 2882.00 | 2904.00 | 2938.00 | 2960.00 | Negative |
| Kapas | 1285.00 | 1277.00 | 1280.00 | 1282.00 | 1285.00 | 1287.00 | 1290.00 | 1292.00 | Positive |
| Chana | 4922.00 | 4806.00 | 4858.00 | 4890.00 | 4942.00 | 4974.00 | 5026.00 | 5058.00 | Positive |
| Mentha | 993.20 | 951.80 | 969.90 | 981.60 | 999.70 | 1011.40 | 1029.50 | 1041.20 | Negative |
| Guarseed | 4063.00 | 3982.00 | 4016.00 | 4039.00 | 4073.00 | 4096.00 | 4130.00 | 4153.00 | Negative |
| Guargum | 6303.00 | 6167.00 | 6225.00 | 6264.00 | 6322.00 | 6361.00 | 6419.00 | 6458.00 | Negative |

MCX MENTHA OIL

Technical Chart



| Open | High | Low | Close | Net Cng |
|---------|---------|--------|----------|---------|
| 1017.80 | 1017.80 | 988.00 | 993.20 | -22.30 |
| OI | % OI | Volume | Trend | % Cng |
| 924.00 | 3.82 | 270.00 | Negative | -2.20 |

Fundamentals

Mentha oil yesterday settled down by -2.2% at 993.2 as average yield in Barabanki is improved by 5-6 kgs per acre due to better weather. Support also seen due to the rotting of the crop due to stagnant water in the field. The past few weeks have been painful as heavy rains in the pre-monsoon season have damaged the mentha crop which was ready for harvesting. Due to drowning in the water, the rows have started to wither. With the harvesting of the crop, oil extraction work has also started. However upside seen limited as arrivals likely to increase due to favourable weather conditions. Daily arrivals should gradually pick up to 400-500 drums in next 7-10 days. Last week, prices rallied. The Lucknow-based Central Institute of Medicinal and Aromatic Plants estimates that this adverse effect of rains on the crop is expected to reduce production by 30% in the last two weeks. The crop is prone to rain because the leaves of the crop start falling due to waterlogging in the field. Most of the farmers have planted Mentha crops and this rain is not less than acid for 50 percent of Mentha crop. In Sambhal spot market, Mentha oil dropped by -7.7 Rupees to end at 1081.6 Rupees per 360 kgs. Technically market is under fresh selling as market has witnessed gain in open interest by 3.82% to settled at 924 while prices down -22.3 rupees, now Mentha oil is getting support at 981.6 and below same could see a test of 969.9 levels, and resistance is now likely to be seen at 1011.4, a move above could see prices testing 1029.5.

Trading Idea for the day

Mentha oil trading range for the day is 969.9-1029.5.

Mentha oil prices dropped in last some session as average yield in Barabanki is improved

Prices gained in recent sessions due to the rotting of the crop due to stagnant water in the field.

The past few weeks have been painful as heavy rains in the pre-monsoon season have damaged the mentha crop which was ready for harvesting.

MCX COTTON

Technical Chart



| Open | High | Low | Close | Net Cng |
|----------|----------|----------|----------|---------|
| 25860.00 | 25860.00 | 25120.00 | 25210.00 | 40.00 |
| OI | % OI | Volume | Trend | % Cng |
| 4812.00 | -4.01 | 579.00 | Positive | 0.16 |

Fundamentals

Cotton yesterday settled up by 0.16% at 25210 tracking firmness in overseas prices as drought continued across the Canadian Prairies, threatening crop yields. The arrival of mustard in the mandis has decreased at all places in the country. U.S. rapeseed production is forecast to reach a record 1.8 million tons on record area and trend yield. Pressure also seen as Canada rapeseed production is projected at 20.5 million tons, up 1.5 million on greater area. U.S. rapeseed production is forecast to reach a record 1.8 million tons on record area and trend yield. Pressure also seen as Canada rapeseed production is projected at 20.5 million tons, up 1.5 million on greater area. COOIT was against any reduction in import duties on edible oils but wanted the Centre to remove the GST of 5 per cent on mustard seed and oil as it will help farmers and consumers both. European Union rapeseed production is projected to show a modest gain in 2021/22 on increased planted area and improved yield but will remain below the levels observed from 2016 to 2018. In spot market, Cotton gained by 10 Rupees to end at 25240 Rupees. Technically market is under short covering as market has witnessed drop in open interest by -4.01% to settled at 4812 while prices up 40 rupees, now Cotton is getting support at 24940 and below same could see a test of 24660 levels, and resistance is now likely to be seen at 25680, a move above could see prices testing 26140.

Trading Idea for the day

Cotton trading range for the day is 24660-26140.

Cotton prices gained on slow sowing and higher demand from mills.

The cotton crop in Punjab has been infected with a pest called pink bollworm for the second consecutive year.

CAI demand for withdrawal of 10 per cent customs duty on cotton imports.

MCX CRUDE PALM OIL

Technical Chart



| Open | High | Low | Close | Net Cng |
|---------|---------|---------|----------|---------|
| 1015.00 | 1038.00 | 1012.50 | 1034.30 | 23.20 |
| OI | % OI | Volume | Trend | % Cng |
| 5196.00 | 0.23 | 1991.00 | Positive | 2.29 |

Fundamentals

Crude palm Oil yesterday settled up by 2.29% at 1034.3 tracking rise in overseas prices amid expectations of tight production. India's demand for Malaysian crude palm oil and Indonesian palm olein has been strong, but it is likely to subside at current price levels and the market will reverse very quickly. Indian buyers have contracted up to 70,000 tonnes of refined bleached deodorized palm oil, mostly from Indonesia, to be shipped in July and August. Malaysia's palm oil inventories at the end of June likely hit a nine-month high as production jumped, although a rebound in exports kept supply tight. India declared that the import of refined palm oil is amended from 'Restricted' to 'Free', allowing imports of the product for six months. India allowed imports of refined bleached deodorized palm oil for six months, the government said in a statement. India has slashed the base import price of palm oil and soybean oil, the government said in a statement, as prices fell in the overseas market. The country cut the import tax on refined palm oil to 41.25% from 49.5% for three months to bring down local edible oil prices. In spot market, Crude palm oil gained by 8.4 Rupees to end at 1040.2 Rupees. Technically market is under fresh buying as market has witnessed gain in open interest by 0.23% to settled at 5196 while prices up 23.2 rupees, now CPO is getting support at 1018.6 and below same could see a test of 1002.8 levels, and resistance is now likely to be seen at 1044.1, a move above could see prices testing 1053.8.

Trading Idea for the day

CPO trading range for the day is 1002.8-1053.8.

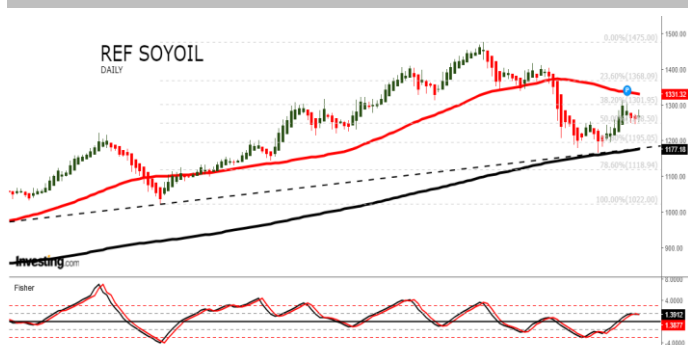
Crude palm oil prices gained tracking rise in overseas prices amid expectations of tight production.

MPOA's output projections lower than expected

India declared that the import of refined palm oil is amended from 'Restricted' to 'Free', allowing imports of the product for six months.

NCDEX SOYOIL

Technical Chart



| Open | High | Low | Close | Net Cng |
|----------|---------|----------|----------|---------|
| 1251.60 | 1286.70 | 1249.50 | 1285.40 | 30.50 |
| OI | % OI | Volume | Trend | % Cng |
| 35815.00 | 1.26 | 25400.00 | Positive | 2.43 |

Fundamentals

Ref.Soyabean oil yesterday settled up by 2.43% at 1285.4 as concerns over tightening edible oil supply underpinned prices. India has slashed the base import price of palm oil and soybean oil, the government said in a statement, as prices fell in the overseas market. India exported 5.31 lakh tonnes of oilmeals in the first two months of the fiscal 2021-22 against 3.50 lakh tonnes in the same period a year ago, recording a growth of 52 per cent. BV Mehta, Executive Director of Solvent Extractors' Association of India (SEA), said the export of oilmeals increased sharply on the back of shipments of rapeseed meal during the period. India has put on hold a proposal to reduce import taxes on edible oils as cooking oil prices started to fall in the world market after hitting record highs, two government and one industry officials told. India slashed the base import prices of palm oil and soybean oil for a fortnight, the government said in a statement, as prices of the cooking oils fell sharply in the global market. Imports would remain elevated even in June as many states are easing lockdowns and allowing restaurants to reopen. At the Indore spot market in Madhya Pradesh, soybean oil was steady at 1297.5 Rupees per 10 kgs. Technically market is under fresh buying as market has witnessed gain in open interest by 1.26% to settled at 35815 while prices up 30.5 rupees, now Ref.Soyabean oil is getting support at 1261 and below same could see a test of 1236 levels, and resistance is now likely to be seen at 1299, a move above could see prices testing 1312.

Trading Idea for the day

Ref.Soyabean oil trading range for the day is 1236-1312.

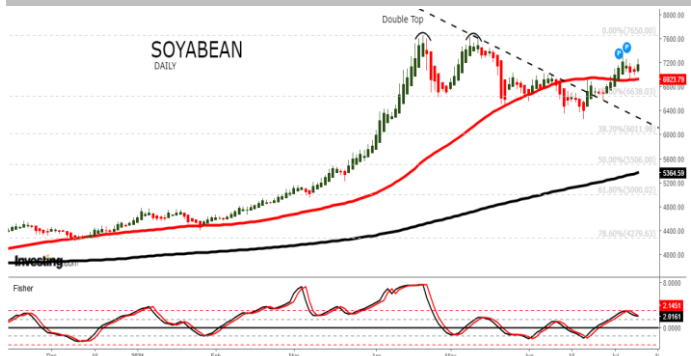
Ref soybean oil ended with gains as concerns over tightening edible oil supply underpinned prices.

India has slashed the base import price of palm oil and soybean oil, the government said in a statement, as prices fell in the overseas market.

India exported 5.31 lakh tonnes of oilmeals in the first two months of the fiscal 2021-22 against 3.50 lakh tonnes in the same period a year ago

NCDEX SOYABEAN

Technical Chart



| Open | High | Low | Close | Net Cng |
|----------|---------|----------|----------|---------|
| 7110.00 | 7250.00 | 7030.00 | 7224.00 | 172.00 |
| OI | % OI | Volume | Trend | % Cng |
| 34710.00 | 11.32 | 21860.00 | Positive | 2.44 |

Fundamentals

Soyabean yesterday settled up by 2.44% at 7224 as a "break" in the monsoon has affected Kharif sowing in many parts of the country this year. However, area under soybean planting is likely to increase by 5-7% across the country this kharif season despite speculation in the market over the shortage of seeds. Farmers, however, are keeping their fingers crossed due to the break in monsoon and hope for a revival of the monsoon to ensure a good crop. In the 2020 kharif season, soybean cultivation took place on 120 lakh hectares and the yield was about 105 lakh tonne. Record high prices for the oilseed could prompt some to switch from cultivating competing commodities such as cotton and pulses, industry officials said. D N Pathak, executive director, Soybean Processors Association of India (SOPA) said that the area under cultivation could see an increase by 5-7% subject to the fact it rains in the next five to six days. Several soybean farmers in Madhya Pradesh have said that the sowing of the kharif crop has not even begun in 60% area even two months after the beginning of the season due to shortage of certified seeds, provided by the government. In Maharashtra, the government has claimed that there was no shortage of soybean seeds and sowing was in full swing. At the Indore spot market in top producer MP, soybean gained 42 Rupees to 7544 Rupees per 100 kgs. Technically market is under fresh buying as market has witnessed gain in open interest by 11.32% to settled at 34710 while prices up 172 rupees, now Soyabean is getting support at 7086 and below same could see a test of 6948 levels, and resistance is now likely to be seen at 7306, a move above could see prices testing 7388.

Trading Idea for the day

Soyabean trading range for the day is 6948-7388.

Soyabean prices gained as a "break" in the monsoon has affected Kharif sowing in many parts of the country this year.

There has been shortage of certified seeds and they have been selling at high prices, but farmers have prepared their own seeds.

In Maharashtra, the government has claimed that there was no shortage of soybean seeds and sowing was in full swing.

NCDEX RMSEED

Technical Chart



| Open | High | Low | Close | Net Cng |
|----------|---------|----------|----------|---------|
| 6793.00 | 6920.00 | 6740.00 | 6882.00 | 89.00 |
| OI | % OI | Volume | Trend | % Cng |
| 45820.00 | 9.51 | 39160.00 | Positive | 1.31 |

Fundamentals

Mustard Seed yesterday settled up by 1.31% at 6882 as the arrival of mustard in the mandis has decreased at all places in the country. U.S. rapeseed production is forecast to reach a record 1.8 million tons on record area and trend yield. Pressure also seen as Canada rapeseed production is projected at 20.5 million tons, up 1.5 million on greater area. U.S. rapeseed production is forecast to reach a record 1.8 million tons on record area and trend yield. Pressure also seen as Canada rapeseed production is projected at 20.5 million tons, up 1.5 million on greater area. COOIT was against any reduction in import duties on edible oils but wanted the Centre to remove the GST of 5 per cent on mustard seed and oil as it will help farmers and consumers both. European Union rapeseed production is projected to show a modest gain in 2021/22 on increased planted area and improved yield but will remain below the levels observed from 2016 to 2018. In Alwar spot market in Rajasthan the prices dropped -15.5 Rupees to end at 7119 Rupees per 100 kg. Technically market is under fresh buying as market has witnessed gain in open interest by 9.51% to settled at 45820 while prices up 89 rupees, now Rmseed is getting support at 6774 and below same could see a test of 6667 levels, and resistance is now likely to be seen at 6954, a move above could see prices testing 7027.

Trading Idea for the day

Rmseed trading range for the day is 6667-7027.

Mustard seed prices gained tracking firmness in overseas prices as drought continued across the Canadian Prairies, threatening crop yields.

The arrival of mustard in the mandis has decreased at all places in the country.

U.S. rapeseed production is forecast to reach a record 1.8 million tons on record area and trend yield.

MCX TURMERIC

Technical Chart



| Open | High | Low | Close | Net Cng |
|---------|---------|---------|----------|---------|
| 7346.00 | 7368.00 | 7250.00 | 7264.00 | -100.00 |
| OI | % OI | Volume | Trend | % Cng |
| 9720.00 | 12.05 | 2690.00 | Negative | -1.36 |

Fundamentals

Turmeric yesterday settled down by -1.36% at 7264 as sentiment is weak and sluggish demand from local stockists amid poor quality arrivals in the market has led to the fall in prices. However downside seen limited on following export demand from Europe, Gulf countries and Bangladesh. The curbs and lockdowns announced to control the second wave of Covid-19 pandemic affected trading. In Nizamabad APMC in Telangana, the modal price of the finger variety turmeric was quoted at ₹6,950 a quintal. Prices are up about ₹400 since the beginning of this month. At Bangalore in Karnataka, turmeric is quoted at ₹11,500 at the APMC yard with most markets closed in the State to control the Covid-19 pandemic. In Tamil Nadu, too, the agricultural markets are closed as part of the lockdown to tackle the pandemic. Demand for exports to Bangladesh and Europe are helping turmeric prices to gain. Exporters are looking to pick up stocks from Nanded in view of its quality. Turmeric has been in demand over the last two years as it is reported to be effective in medical use, particularly in combating Covid-19. In Nizamabad, a major spot market in AP, the price ended at 7301.9 Rupees gained 1.9 Rupees. Technically market is under fresh selling as market has witnessed gain in open interest by 12.05% to settled at 9720 while prices down -100 rupees, now Turmeric is getting support at 7220 and below same could see a test of 7176 levels, and resistance is now likely to be seen at 7338, a move above could see prices testing 7412.

Trading Idea for the day

Turmeric trading range for the day is 7176-7412.

Turmeric dropped as sentiment is weak and sluggish demand from local stockists amid poor quality arrivals in the market has led to the fall in prices.

However downside seen limited on following export demand from Europe, Gulf countries and Bangladesh.

The curbs and lockdowns announced to control the second wave of Covid-19 pandemic affected trading.

NCDEX JEERA

Technical Chart



| Open | High | Low | Close | Net Cng |
|----------|----------|----------|----------|---------|
| 13330.00 | 13330.00 | 13210.00 | 13250.00 | -60.00 |
| OI | % OI | Volume | Trend | % Cng |
| 5379.00 | 18.12 | 1287.00 | Negative | -0.45 |

Fundamentals

Jeera yesterday settled down by -0.45% at 13250 amid excess supply and as demand is likely to remain subdued on weak buying from local and overseas markets. Farmers need money to start sowing the kharif crop and they are bringing huge stocks to sell in the market after the easing of Covid-related restrictions. In the benchmark market Unjha, 7,000 bags (1 bag = 55 kg) arrived yesterday as against 10,000 bags. As India struggles against curbing the Corona pandemic, exports markets have turned subdued. The importers prefer to wait for the situation to normalize before negotiating for fresh deals. They rather prefer to clear their older stocks first and presently they feel that the older inventory may be sufficient to balance the existing demand for next few weeks easily. The new season arrivals shall continue with good numbers hence there will be ample availability in the market. However from a broader perspective, India's exports outlook has brightened while crop is expected to be lower versus year on year. Also, the nearest export competitors i.e. Turkey and Syria may not supply much to the world due to lower exportable surplus. In Unjha, a key spot market in Gujarat, jeera edged down by -41.85 Rupees to end at 13513.15 Rupees per 100 kg. Technically market is under fresh selling as market has witnessed gain in open interest by 18.12% to settled at 5379 while prices down -60 rupees, now Jeera is getting support at 13200 and below same could see a test of 13145 levels, and resistance is now likely to be seen at 13320, a move above could see prices testing 13385.

Trading Idea for the day

Jeera trading range for the day is 13145-13385.

Jeera settled down amid excess supply and as demand is likely to remain subdued on weak buying

Farmers need money to start sowing the kharif crop and they are bringing huge stocks to sell in the market after the easing of Covid-related restrictions.

As India struggles against curbing the Corona pandemic, exports markets have turned subdued.



Disclaimer

Analyst Certification:

We /I, Jaydeb Dey Research Analyst(s) of SMIFS Limited (in short "SMIFS / the Company"), authors and the names subscribed to this Research Report, hereby certify that all of the views expressed in this Research Report accurately reflect our views about the subject issuer(s) or securities and distributed as per SEBI (Research Analysts) Regulations 2014. We also certify that no part of our compensation was, is, or will be directly or indirectly related to the specific recommendation(s) or view(s) in this Research Report. It is also confirmed that We/I, the above mentioned Research Analyst(s) of this Research Report have not received any compensation from the subject companies mentioned in the Research Report in the preceding twelve months and do not serve as an officer, director or employee of the subject companies mentioned in the Research Report.

Terms & Conditions and Other Disclosures:

SMIFS Limited is engaged in the business of Stock Broking, Depository Services, Portfolio Management and Distribution of Financial Products. SMIFS Limited is registered as Research Analyst Entity with Securities & Exchange Board of India (SEBI) with Registration Number – INH300001474.

SMIFS and our associates might have investment banking and other business relationship with a significant percentage of companies covered by our Research Analysts. SMIFS generally prohibits its analysts, persons reporting to analysts and their relatives from maintaining a financial interest in the securities or derivatives of any companies that the analysts cover.

The information and opinions in this Research Report have been prepared by SMIFS and are subject to change without any notice. The Research Report and information contained herein is strictly confidential and meant solely for the selected recipient and may not be altered in any way, transmitted to, copied or distributed, in part or in whole, to any other person or to the media or reproduced in any form, without prior written consent of SMIFS Limited. While we would endeavor to update the information herein on a reasonable basis, SMIFS is under no obligation to update or keep the information current. Also, there may be regulatory, compliance or other reasons that may prevent SMIFS from doing so. Non-rated securities indicate that rating on a particular security has been suspended temporarily and such suspension is in compliance with applicable regulations and/or policies of SMIFS, in circumstances where SMIFS might be acting in an advisory capacity to this company, or in certain other circumstances.

This Research Report is based on information obtained from public sources and sources believed to be reliable, but no independent verification has been made nor is its accuracy or completeness guaranteed. This Research Report and information herein is solely for informational purpose and shall not be used or considered as an offer document or solicitation of offer to buy or sell or subscribe for securities or other financial instruments. Securities as defined in clause (h) of section 2 of the Securities Contract Act, 1956, includes Financial Instruments, Currency and Commodity Derivatives. Though disseminated to all the customers simultaneously, not all customers may receive this Research Report at the same time. SMIFS will not treat recipients as customers by virtue of their receiving this Research Report. Nothing in this Research Report constitutes investment, legal, accounting and tax advice or a representation that any investment or strategy is suitable or appropriate to your specific circumstances. The securities discussed and opinions expressed in this Research Report may not be suitable for all investors, who must make their own investment decisions, based on their own investment objectives, financial positions and needs of specific recipient. This may not be taken in substitution for the exercise of independent judgment by any recipient. The recipient should independently evaluate the investment risks. The value and return on investment may vary because of changes in interest rates, foreign exchange rates or any other reason. SMIFS accepts no liabilities whatsoever for any loss or damage of any kind arising out of the use of this Research Report. Past performance is not necessarily a guide to future performance. Investors are advised to see Risk Disclosure Document to understand the risks associated before investing in the securities markets. Actual results may differ materially from those set forth in projections. Forward-looking statements are not predictions and may be subject to change without notice. The information given in this report is as of date of this report and there can be no assurance that future results or events will be consistent with this information. The information provided in this report remains, unless otherwise stated, the copyright of SMIFS. All layout, design, original artwork, concepts and intellectual Properties remains the property and copyright of SMIFS and may not be used in any form or for any purpose whatsoever by any party without the express written permission of the SMIFS.

SMIFS shall not be liable for any delay or any other interruption which may occur in presenting the data due to any reason including network (Internet) reasons or snags in the system, breakdown of the system or any other equipment, server breakdown, maintenance shutdown, breakdown of communication services or inability of SMIFS to present the data. In no event shall SMIFS be liable for any damages, including without limitation direct or indirect, special, incidental, or consequential damages, losses or expenses arising in connection with the data presented by the SMIFS through this report.

Participants in foreign exchange transactions may incur risks arising from several factors, including the following: (a) Exchange Rates can be volatile and are subject to large fluctuations; (b) the value of currencies may be affected by numerous market factors, including world and notional economic, political and regulatory events, events in Equity & Debt Markets and changes in interest rates; and (c) Currencies may be subject to devaluation or government imposed Exchange Controls which could affect the value of the Currency. Investors in securities such as Currency Derivatives, whose values are affected by the currency of an underlying security, effectively assume currency risk.

Since associates of SMIFS are engaged in various financial service businesses, they might have financial interests or beneficial ownership in various companies including the subject company/companies mentioned in this Research Report.



Disclaimer

SMIFS and its Associates, Officers, Directors, Employees, Research Analysts including their relatives worldwide may: (i) from time to time have long or short positions in, and buy or sell the Securities, mentioned herein or (ii) be engaged in any other transaction involving such Securities and earn brokerage or other compensation or act as a market maker in the Financial Instruments of the Subject Company/ companies mentioned herein or act as an Advisor or Lender/Borrower to such Companies or have other potential/material Conflict of Interest with respect to any recommendation and related information and opinions at the time of the publication of the Research Report. Or at the time of Public Appearance. SMIFS does not have proprietary trades but may at a future date, may opt for the same with prior intimation to Clients/ Investors and extant Authorities where it may have proprietary long/short position in the above Scrip(s) and therefore should be considered as interested. The views provided herein are general in nature and do not consider Risk Appetite or Investment Objective of any particular Investor; Clients/ Readers/ Subscribers of this Research Report are requested to take independent professional advice before investing. The information provided herein should not be construed as invitation or solicitation to do business with SMIFS.

SMIFS or its subsidiaries collectively or Research Analysts or their relatives do not own 1% or more of the equity securities of the Company mentioned in the Research Report as of the last day of the month preceding the publication of the Research Report.

SMIFS encourages independence in Research Report preparation and strives to minimize conflict in preparation of Research Report. Accordingly, neither SMIFS and their Associates nor the Research Analysts and their relatives have any material conflict of interest at the time of publication of this Research Report or at the time of the Public Appearance, if any.

SMIFS or its associates might have managed or co-managed public offering of securities for the subject company or might have been mandated by the subject company for any other assignment in the past twelve months.

SMIFS or its associates might have received any compensation from the companies mentioned in the Research Report during the period preceding twelve months from the date of this Research Report for services in respect of managing or co-managing public offerings, corporate finance, investment banking, brokerage services or other advisory service in a merger or specific transaction from the subject company.

SMIFS or its associates might have received any compensation for products or services other than investment banking or brokerage services from the subject companies mentioned in the Research Report in the past twelve months.

SMIFS or its associates or its Research Analysts did not receive any compensation or other benefits whatsoever from the subject companies mentioned in the Research Report or third party in connection with preparation of the Research Report.

Compensation of Research Analysts is not based on any specific Investment Banking or Brokerage Service Transactions.

The Research Analysts might have served as an officer, director or employee of the subject company.

Neither the Research Analysts nor SMIFS have been engaged in market making activity for the companies mentioned in the Research Report.

SMIFS may have issued other Research Reports that are inconsistent with and reach different conclusion from the information presented in this Research Report.

A graph of daily closing prices of the securities/commodities is also available at www.nseindia.com and/or www.bseindia.com, www.mcxindia.com and/or www.icex.com.

SMIFS submit' s that no material disciplinary action has been taken on the Company by any Regulatory Authority impacting Equity Research Analysis activities in last 3 years.

This Research Report is not directed or intended for distribution to, or use by, any person or entity who is a citizen or resident of or located in any locality, state, country or other jurisdiction, where such distribution, publication, availability or use would be contrary to law, regulation or which would subject SMIFS and affiliates to any registration or licensing requirement within such jurisdiction. The securities described herein may or may not be eligible for sale in all jurisdictions or to certain category of investors. Persons in whose possession this document may come are required to inform themselves of and to observe such restriction.

For queries related to compliance of the report, please contact: -

Sudipto Datta, Compliance Officer



SMIFS Limited

5F, Vaibhav, 4 Lee Road, Kolkata – 700020, India

Contact No.: +91 33 4011 5414 /91 33 6634 5414

Email Id.: compliance@smifs.com / sudipto@smifs.com

Website: www.smifs.com